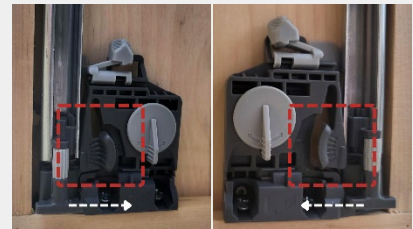


Dovetail Drawer Adjustments

Slide and Dovetail Box [On and Off] Instructions



The drawer is inserted at an angle from above on the extended runners. The drawer is placed horizontally on the runners and pushed into place. The catch automatically locks the drawer onto the Quadro runner for a secure fit. Always ensure to open and close the drawer to ensure the runner is on properly.



To unlatch and remove the drawer box, push these buttons in on both clips to release.

Quadro 3D Glide (Slide) Adjustments for Dovetail Drawers

3 Motion Adjustability for a more intuitive and user-friendly experience.



Height Adjustment (Up) (+ 3 mm)

- Press in (and hold) and slide the button from side to side, **on both clips**, as necessary, and release to lock in.
- There is +3 mm of Up Adjustment range available.



Side to Side Adjustment (Left to Right) (+/- 1.5 mm)

- Turn both wheels simultaneously (on each clip) with the same motion. You will hear them click.
- There is +/- 1.5 mm of Adjustment range available.



Front to Back Adjustment (In & Out Depth) (+2 mm / - 1 mm)

- Turn the wheel on either side.
- There is +2 mm / - 1 mm of Adjustment range available.

Proudly Made in Canada since 1980

www.superiorcabinets.ca | .us

 **SUPERIOR**
CABINETS