

Dovetail Drawer Adjustments

The height can be adjusted up to 3mm without the need for tools. This provides a simple and precise way to adjust the front spacing on your cabinetry.



Slide On Installation

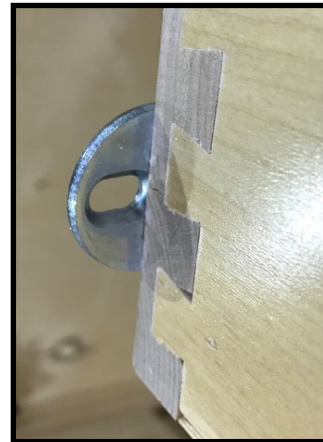
The drawer is inserted at an angle from above on the extended runners. The drawer is placed horizontally on the runners and pushed into place. The catch automatically locks the drawer onto the Quadro runner for secure fit.



To unlatch and remove the drawer box, pull back on the finger latch (fixing clip). The height setting will remain unchanged.

Dovetail Drawer Front Attachment Bracket Adjustments

Drawer fronts on our dovetail drawers are attached using an attachment disk. This disk is attached to the drawer box and is set into a 35mm cup on the back of the drawer front.

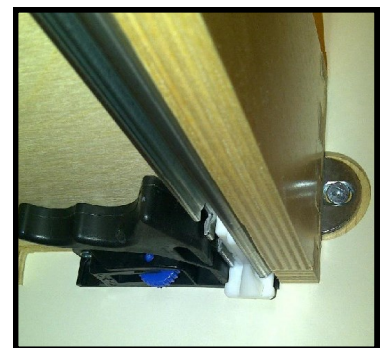


8mm x 11.5mm
Euroscrew



To Adjust the Drawer Front, one of the following methods can be used:

- Loosen the Euroscrew that is attached to the drawer front, adjust the front and retighten the screw.
- Remove the entire front, loosen the disc from the dovetail drawer box, adjust to the desired position, and retighten and reinstall the drawer front.
- A professional cabinet installer can use manual force to adjust the fronts by pushing up or down on the fronts to achieve the desired reveal without loosening the fronts.
- The blue thumb wheel on the fixing clip can also be used to adjust the height up or down.



Proudly Manufactured in Western Canada since 1980

