

# Aventos HF Adjustments

AVENTOS HF is designed for quick and easy assembly - with just a few tools. The lift mechanism can be adjusted with a cordless screwdriver to achieve optimal function. AVENTOS HF will open, stop and close with reliable ease. 3-dimensional front adjustment produces precise gap alignment.



Proudly Manufactured in Western Canada since 1980

 **SUPERIOR**  
CABINETS

# Aventos HF Adjustments

AVENTOS HF is designed for quick and easy assembly - with just a few tools. The lift mechanism can be adjusted with a cordless screwdriver to achieve optimal function. AVENTOS HF will open, stop and close with reliable ease. 3-dimensional front adjustment produces precise gap alignment.

**NOTE:** Open the locking lever on the telescopic arm when adjusting and then re-close when finished.



OPEN/LOCKED



CLOSE/UNLOCKED



**Warnung / Warning / Attention / Attenzione / Advertencia / Ostrzeżenie / 警告**



Verletzungsgefahr durch hochspringenden Teleskophebel!

Risk of injury by spring-loaded telescopic arm!

Risque de blessure en cas de relevage brusque du bras télescopique !

Pericolo di lesioni a causa del possibile scatto verso l'alto della leva telescopica!

Peligro de lesiones por salto de la palanca telescópica.

Niebezpieczeństwo zranienia przez gwałtownie unoszący się podnośnik teleskopowy!

アームが跳ね上がってケガをする可能性があります。



Teleskophebel nicht nach unten drücken, sondern entfernen.

Do not push telescopic arm down without door attached but remove.

Ne pas pousser le bras télescopique vers le bas, mais le retirer.

Non spingere la leva telescopica verso il basso, altrimenti rimuoverlo.

No apretar la palanca telescópica hacia abajo, si no retirarlo.

Nie opuszczać podnośnika teleskopowego, lecz wyjąć.

アームを外す時は下に押さないでください。

# Aventos HF Adjustments

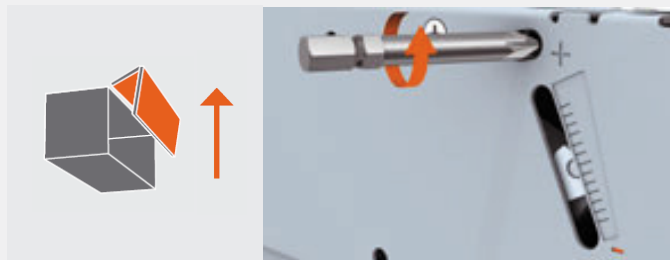
AVENTOS HF is designed for quick and easy assembly - with just a few tools. The lift mechanism can be adjusted with a cordless screwdriver to achieve optimal function. AVENTOS HF will open, stop and close with reliable ease. 3-dimensional front adjustment produces precise gap alignment.



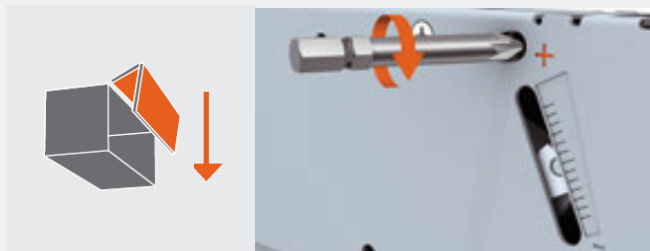
## 1. VARIABLE STOP.

Adjust the lift mechanism using a cordless drill so that the lift system remains in any desired position when opening.

a. if the lift system rises when you let go...



b. if the lift system falls when you let go...



To adjust the lift mechanism to the respective door weight, always use a cordless drill (bit Pozidriv® cross slot size 2, 39 mm).

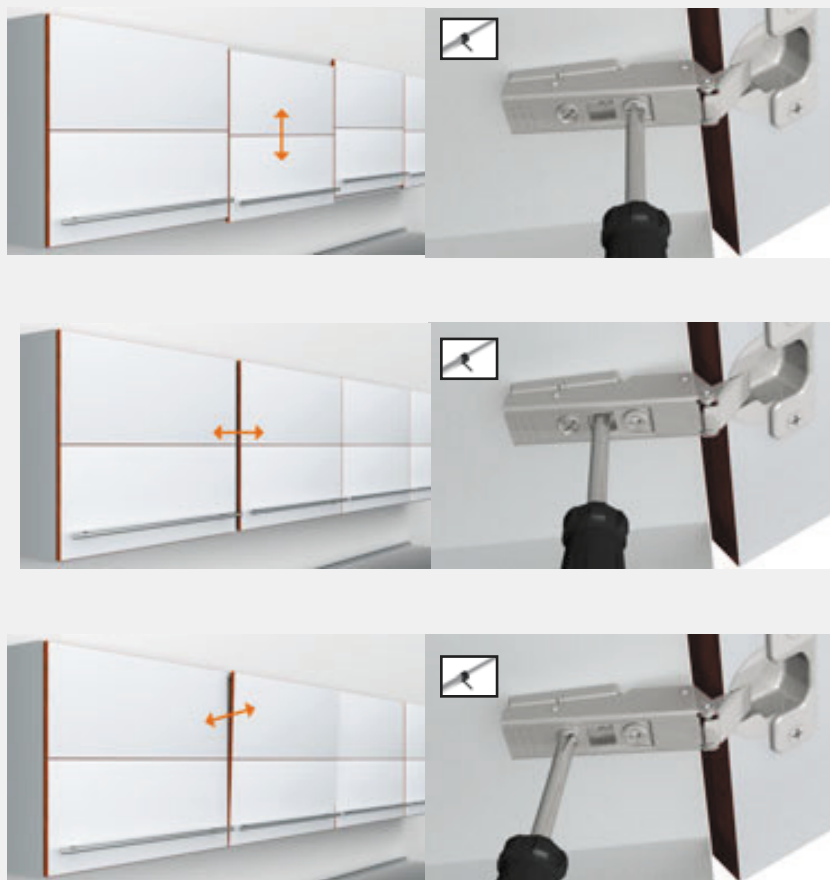
# Aventos HF Adjustments

AVENTOS HF is designed for quick and easy assembly - with just a few tools. The lift mechanism can be adjusted with a cordless screwdriver to achieve optimal function. AVENTOS HF will open, stop and close with reliable ease. 3-dimensional front adjustment produces precise gap alignment.



## 2. TOP GAP ALIGNMENT:

Gap alignment can be adjusted in all 3 dimensions with the CLIP top hinge, using a phillips screwdriver. (height, side, tilt of both fronts).



# Aventos HF Adjustments

AVENTOS HF is designed for quick and easy assembly - with just a few tools. The lift mechanism can be adjusted with a cordless screwdriver to achieve optimal function. AVENTOS HF will open, stop and close with reliable ease. 3-dimensional front adjustment produces precise gap alignment.



## 3. BOTTOM GAP ALIGNMENT:

On the CLIP top centre hinge, the gap design is adjusted in 3 dimensions using a Phillips screwdriver.



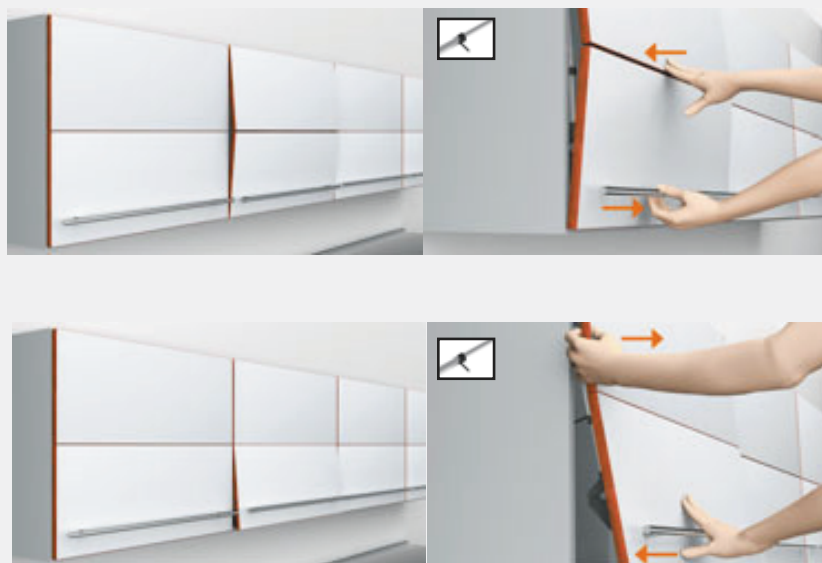
# Aventos HF Adjustments

AVENTOS HF is designed for quick and easy assembly - with just a few tools. The lift mechanism can be adjusted with a cordless screwdriver to achieve optimal function. AVENTOS HF will open, stop and close with reliable ease. 3-dimensional front adjustment produces precise gap alignment.



## 4. FRONT IMAGE:

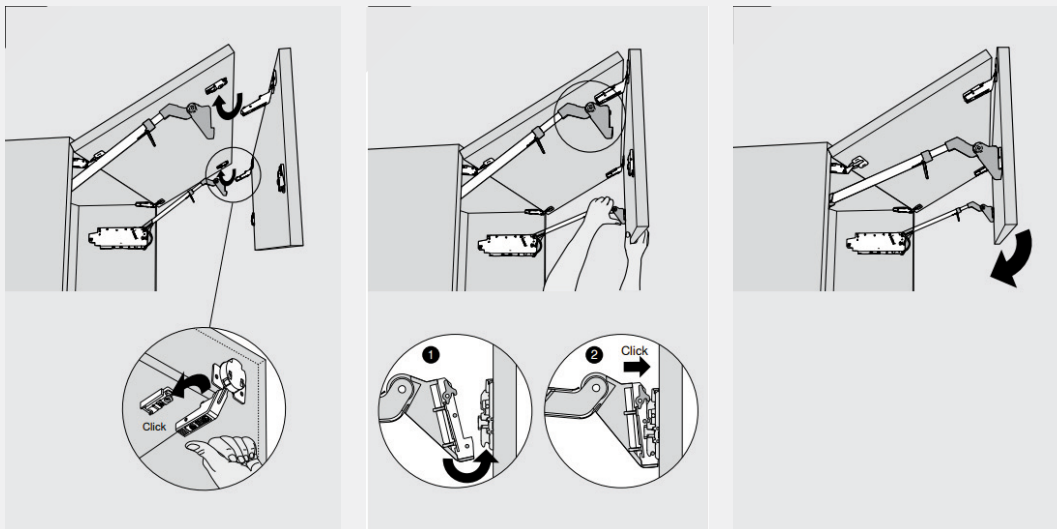
Finally, optimise the vertical position of the lift system. To test, use the palm of your hand to lightly press on the fronts.



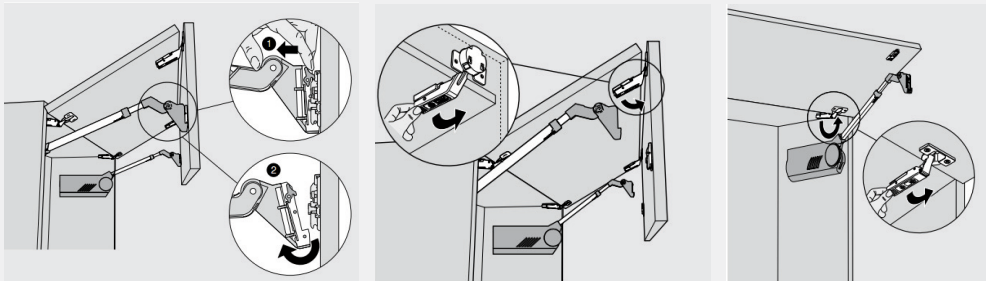
# Aventos HF Adjustments

AVENTOS HF is designed for quick and easy assembly - with just a few tools. The lift mechanism can be adjusted with a cordless screwdriver to achieve optimal function. AVENTOS HF will open, stop and close with reliable ease. 3-dimensional front adjustment produces precise gap alignment.

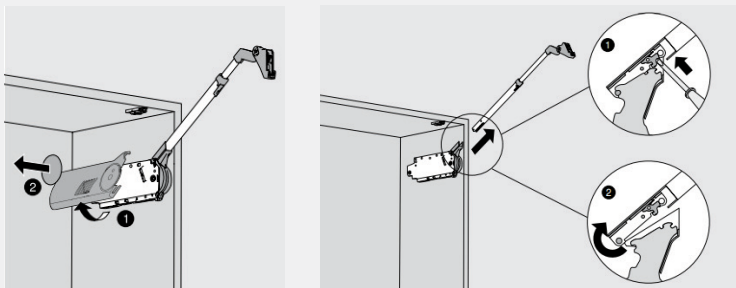
## DOOR ATTACHMENT:



## DOOR REMOVAL:



## ARM REMOVAL:

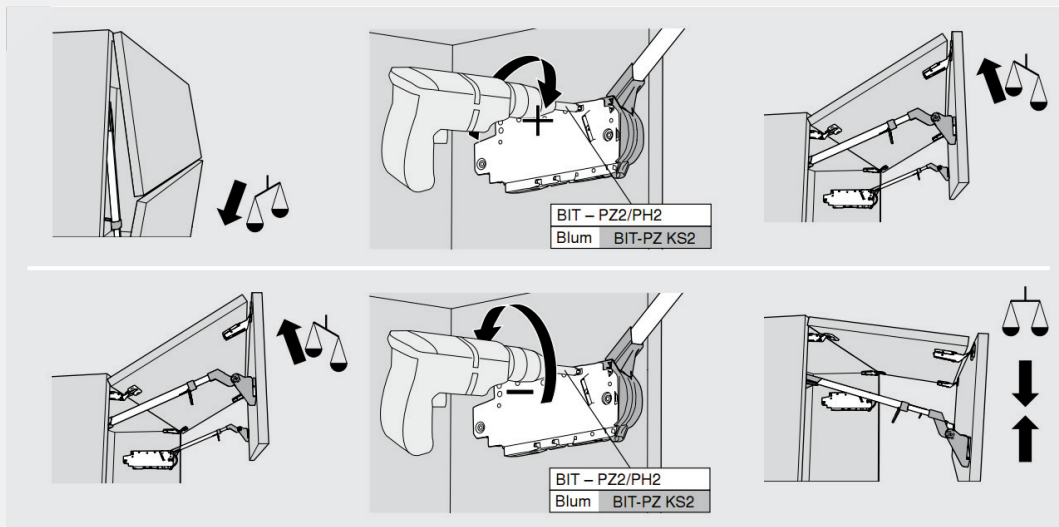




# Aventos HF Adjustments

AVENTOS HF is designed for quick and easy assembly - with just a few tools. The lift mechanism can be adjusted with a cordless screwdriver to achieve optimal function. AVENTOS HF will open, stop and close with reliable ease. 3-dimensional front adjustment produces precise gap alignment.

## TENSION ADJUSTMENT:



## OPENING ANGLE STOP :

